

$n1(\max)$ = 6500 U/min
 $n2(\max)$ = 6500 U/min
 $M(\max)$ = 25Nm
 $i(n1/n2)$ = 1 : 1

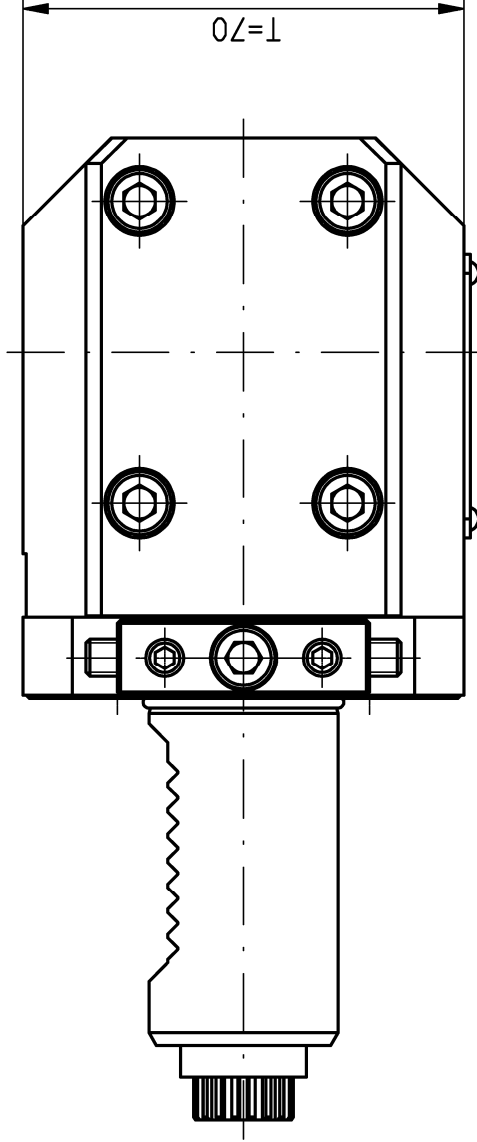
Drehrichtungskehr
 direction of rotation reversal

Kühlmittelzufuhr e.K. über Spritzrohr
 external coolant supply through pipes

Gewicht ca. 4kg
 weight around 4kg

Kopf 180° gedreht montierbar
 head 180° adjusted mountable

Only for information !
 When one change, the drawing does not interchange
 It is strictly prohibited to copy,
 reproduce or develop these drawings
 to third persons without having our
 written permission. A copyright violation
 involves a claim for damages and is
 indictable if it is premeditative done.
 Fa. mimatic GmbH



A103554

ID-Nr. **ZWH**

Maßstab 1:1

Werkstoff:
Maßblatt

| manuelle Änderung | ID-Nr. | Allg. Tol. | Name |
|-------------------|---------------|---------------------|------------|
| | | ISO 2768-m | |
| | | 19.07.2016 | |
| | | Bearb. 05.08.2008 | Deitch |
| | | Gepr. 19.07.2016 | Schmalholz |
| | | F/M/Q | |
| | | dw. C. 00125847.5ZA | |
| | | Zeichnungs-Nr.: | |
| | | 00031158 | |
| 02 | Ständer 2016 | 27.06.2016 | Schmitt |
| 01 | Text geändert | 19.12.2008 | Weiß |
| Zust. | Änderung | Datum | Name |
| | | Urspr. 00031158-Z | |

mimatic
 m i m a t i c
 mimatic 87488 Betzigou - Westendstraße 3
 GmbH Tel.: 0831/57444-0 Fax.: -90
 AGW-SA-C-30-5480-ER25-E Blatt
 L1=55 i=1:1 S=55 Rechts
 Ers. f.: Ers. d.: Plaisirserver